

LOCK SCHEDULE	
MARK	LOCKSET
B571	SCHLAGE B571 RESTROOM INDICATOR DEADBOLT
CLO	CLOSET BALL LATCH
DP	ADA DOOR PULL
EL	EXIT LOCK - BLANK PLATE OUTSIDE, INSIDE FREE FOR IMMEDIATE EGRESS
F75	PASSAGE - NO LOCK
F76	BATHROOM LOCK
F82	OFFICE LOCK
F84	CLASSROOM LOCK
F86	STOREROOM
F109	LEVEL OUTSIDE W/ PANIC HARDWARE ON INSIDE
PP	PUSH PANEL ON PUSH SIDE, ADA DOOR PULL ON PULL SIDE
PP-1	CONCEALED ROD PANIC - 5770, 48" LADDER PULL HANDLE


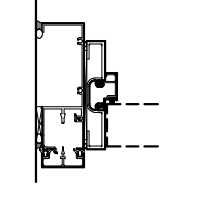
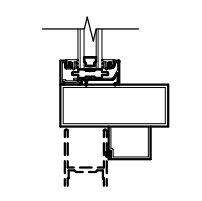
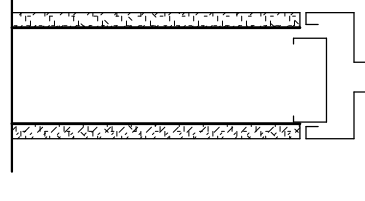
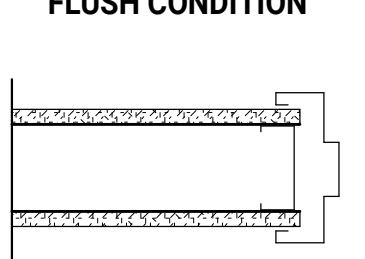
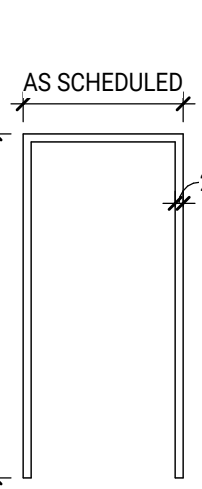
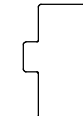
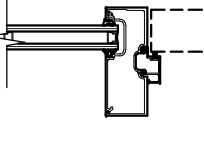
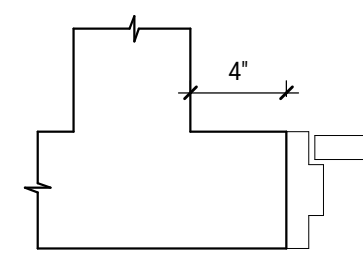
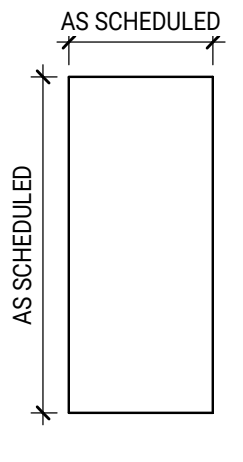
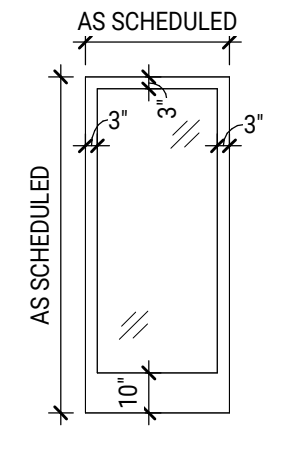
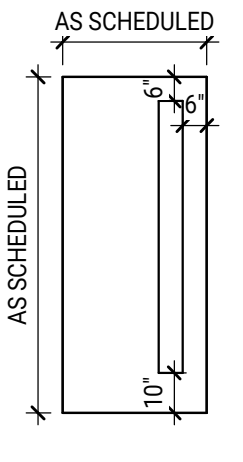
PANIC HARDWARE SCHEDULE							
DOOR NUMBER	TO ROOM #	TO ROOM NAME	DR. WIDTH	LOAD FACTOR	OCC. LOAD	MAX DR OCC LOAD	
4B	4	CLASSROOM	3'-0"	0.2	16	180	
27A	27	CORRIDOR	6'-0"	0.2	167	360	
29C	100	LOBBY	6'-0"	0.2	345	360	
31B	31	CLASSROOM	3'-0"	0.2	35	180	
101A	100	LOBBY	6'-0"	0.2	177	360	
101C	101	LOBBY	6'-0"	0.2	177	360	
101D	101	LOBBY	6'-0"	0.2	177	360	
101F	101	LOBBY	6'-0"	0.2	254	360	
102A	102	WELCOME	6'-0"	0.2	124	360	
105A	106	SH-LOCK	6'-0"	0.2	130	360	
105B	106	SH-LOCK	6'-0"	0.2	252	360	
107B	107	CORRIDOR	3'-0"	0.2	31	180	
114A	114	WORSHIP	3'-0"	0.2	125	180	
116A	116	SH-LOCK	6'-0"	0.2	252	360	

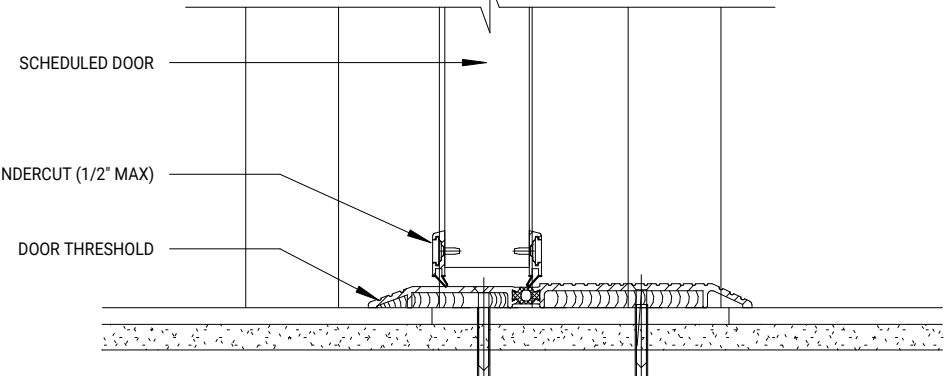
DOOR ACCESSORIES	
KEY NAME	DOOR HARDWARE DESCRIPTION
HDW-1	EXTERIOR DOOR - BUTT HINGES, PANIC HARDWARE, PANIC EXIT DEVICE W/ ENTRANCE LEVER, THRESHOLD, WEATHER STRIPPING, DOOR SWEEP, KICK PLATE, CLOSER
HDW-2	EXTERIOR DOOR - BUTT HINGES, PANIC HARDWARE, THRESHOLD, WEATHER STRIPPING, DOOR SWEEP, KICK PLATE, CLOSER
HDW-3	EXTERIOR DOOR - BUTT HINGES, DOOR STOP, KICK PLATE, CLOSER
HDW-4	INTERIOR DOOR - BUTT HINGES, PANIC EXIT DEVICE W/ ENTRANCE LEVER, DOOR SWEEP/SEAL, KICK PLATE, CLOSER
HDW-5	INTERIOR DOOR - BUTT HINGES, DOOR STOP, KICK PLATE, CLOSER
HDW-6	INTERIOR DOOR - BUTT HINGES, DOOR STOP, CLOSER
HDW-7	INTERIOR DOOR - CONCEALED HINGE, LIGHT-DUTY TOUCH LATCH

DOOR SCHEDULE - EXISTING HARDWARE														
DOOR NO.	DESCRIPTION	DOOR PANEL				DOOR FRAME		DETAILS			FIRE RATING	HARDWARE	COMMENTS	
		WIDTH	HEIGHT	PANELS	PANEL TYPE	MATERIAL	TYPE	MATERIAL	HEAD	JAMB				SILL
T/F, F. FIRST FLOOR														
4B	HINGED	3'-0"	7'-0"	SINGLE	F	WD	FR-1	HM				HDW-4	PANIC	
31B	HINGED	3'-0"	7'-0"	SINGLE	HG	MTL	FR-1	HM				HDW-2	PANIC	

DOOR SCHEDULE - DEMO														
DOOR NO.	DESCRIPTION	DOOR PANEL				DOOR FRAME		DETAILS			FIRE RATING	HARDWARE	COMMENTS	
		WIDTH	HEIGHT	PANELS	PANEL TYPE	MATERIAL	TYPE	MATERIAL	HEAD	JAMB				SILL
T/F, F. FIRST FLOOR														
1A	HINGED	6'-0"	7'-0"	DOUBLE	S	ALUM/GL	FR-1	ALUM				HDW-1		
1B	HINGED	6'-0"	7'-0"	DOUBLE	S	ALUM/GL	FR-1	ALUM				HDW-1		
20A	HINGED	3'-0"	7'-0"	SINGLE	F	WD	FR-1	ALUM				HDW-6		

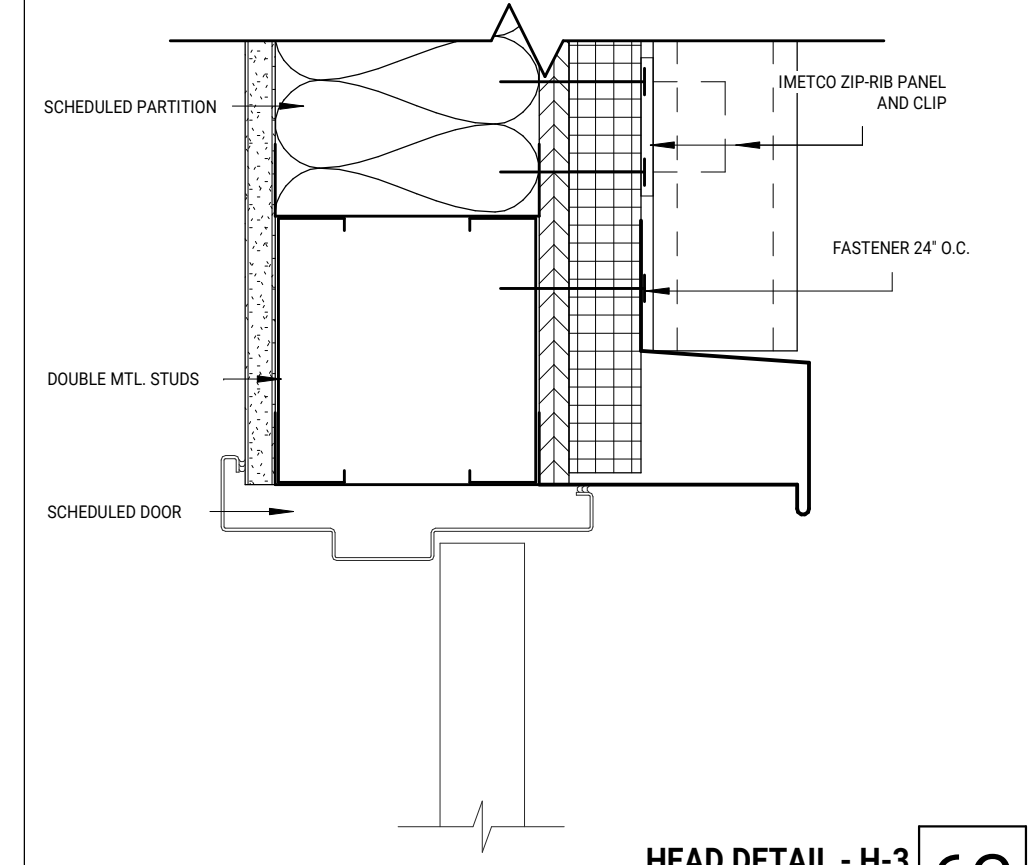
DOOR SCHEDULE - PROPOSED																				
DOOR NO.	DESCRIPTION	DOOR PANEL				PANEL TYPE	MATERIAL	PANEL FINISH	DOOR FRAME		FRAME FINISH	DETAILS			FIRE RATING	HARDWARE	LOCKSET	COMMENTS		
		WIDTH	HEIGHT	PANELS	TYPE				MATERIAL	HEAD		JAMB	SILL							
T/F, F. FIRST FLOOR																				
27A	HINGED	6'-0"	7'-0"	DOUBLE	F	WD	RA-18	FR-1	HM	PT-03	H-1	J-1	S-1		HDW-4	PP	PANIC			
27B	HINGED	3'-0"	7'-0"	SINGLE	F	WD	RA-18	FR-1	HM	PT-03	H-1	J-1	S-1		HDW-6	F84				
29C	HINGED	6'-0"	7'-0"	DOUBLE	F	ALUM/GL	RA-18	FR-1	ALUM	PT-03	H-3	J-3	S-1		HDW-1	PP	PANIC			
100G	FIREGUARD MOVEABLE FIREWALL	14'-6"	9'-0"	FIRE CURTAIN	OH-FC	-	ALUM- BLACK	FR-2	ALUM	ALUM- BLACK	H-2	J-2	S-1	90 MIN	(none)	(none)				
101A	HINGED	6'-0"	8'-0"	DOUBLE	S	ALUM/GL	ALUM- BLACK	FR-1	ALUM	ALUM- BLACK	H-3	J-3	S-2		HDW-1	PP	PANIC			
101B	HINGED	6'-0"	8'-0"	DOUBLE	S	ALUM/GL	ALUM- BLACK	FR-1	ALUM	ALUM- BLACK	H-3	J-3	S-2		HDW-1	PP				
101C	HINGED	6'-0"	8'-0"	DOUBLE	S	ALUM/GL	ALUM- BLACK	FR-1	ALUM	ALUM- BLACK	H-3	J-3	S-2		HDW-1	PP	PANIC			
101D	HINGED	6'-0"	8'-0"	DOUBLE	S	ALUM/GL	ALUM- BLACK	FR-1	ALUM	ALUM- BLACK	H-3	J-3	S-2		HDW-1	PP	PANIC			
101E	HINGED	3'-0"	8'-0"	SINGLE	S	ALUM/GL	ALUM- BLACK	FR-1	ALUM	ALUM- BLACK	H-3	J-3	S-2		HDW-1	PP				
102A	HINGED	6'-0"	7'-0"	DOUBLE	N	WD	RA-18	FR-1	HM	PT-03	H-1	J-1	S-1		HDW-4	PP-1	PANIC			
102B	HINGED	6'-0"	7'-0"	DOUBLE	N	WD	RA-18	FR-1	HM	PT-03	H-1	J-1	S-1		HDW-4	PP-1	PANIC			
102B	HINGED	3'-0"	7'-0"	SINGLE	F	WD	PT-01	FR-1	HM	PT-01	H-1	J-1	S-1		HDW-6	F86				
104A	HINGED	3'-0"	7'-0"	SINGLE	F	WD	PT-02	FR-1	HM	PT-02	H-1	J-1	S-1		HDW-6	F86				
105A	HINGED	6'-0"	7'-0"	DOUBLE	F	MTL	PT-03	FR-1	HM	PT-03	H-3	J-3	S-1E		HDW-2	PP	PANIC			
105B	HINGED	6'-0"	7'-0"	DOUBLE	F	WD	RA-18	FR-1	HM	PT-03	H-1	J-1	S-1		HDW-4	PP-1	PANIC			
106A	HINGED	3'-0"	7'-0"	SINGLE	F	WD	RA-18	FR-1	HM	PT-03	H-1	J-1	S-1		HDW-6	F86				
107A	HINGED	3'-0"	7'-0"	SINGLE	F	WD	RA-18	FR-1	HM	PT-03	H-1	J-1	S-1		HDW-6	F75				
107B	HINGED	3'-0"	7'-0"	SINGLE	F	MTL	PT-03	FR-1	HM	PT-03	H-3	J-3	S-1E		HDW-1	PP	PANIC			
107C	HINGED	5'-0"	7'-0"	DOUBLE	F	WD	PT-01	FR-1	HM	PT-01	H-1	J-1	S-1		HDW-5	F86				
108A	HINGED	3'-0"	7'-0"	SINGLE	F	WD	RA-18	FR-1	HM	PT-03	H-1	J-1	S-1		HDW-6	F76				
109A	HINGED	3'-0"	7'-0"	SINGLE	F	WD	RA-18	FR-1	HM	PT-03	H-1	J-1	S-1		HDW-6	F76				
111A	HINGED	3'-0"	7'-0"	SINGLE	F	WD	RA-18	FR-1	HM	PT-03	H-1	J-1	S-1		HDW-6	F82				
111B	HINGED	3'-0"	7'-0"	SINGLE	F	WD	PT-01	FR-1	HM	PT-01	H-1	J-1	S-1		HDW-6	F82				
112A	HINGED	3'-0"	7'-0"	SINGLE	F	WD	RA-18	FR-1	HM	PT-03	H-1	J-1	S-1		HDW-6	F82				
112B	HINGED	3'-0"	7'-0"	SINGLE	F	WD	PT-01	FR-1	HM	PT-01	H-1	J-1	S-1		HDW-6	F86				
114A	HINGED	3'-0"	7'-0"	SINGLE	F	MTL	PT-03	FR-1	HM	PT-03	H-3	J-3	S-1E		HDW-2	EL	PANIC			
115A	HINGED	6'-0"	7'-0"	DOUBLE	F	MTL	PT-03	FR-1	HM	PT-03	H-3	J-3	S-1E		HDW-3	EL				
116A	HINGED	6'-0"	7'-0"	DOUBLE	F	WD	RA-18	FR-1	HM	PT-03	H-1	J-1	S-1		HDW-4	PP-1	PANIC			
117A	HINGED	6'-0"	7'-0"	DOUBLE	F	WD	PT-01	FR-1	HM	PT-01	H-1	J-1	S-1		HDW-5	F86				
118A	HINGED	3'-0"	7'-0"	SINGLE	F	WD	PT-01	FR-1	HM	PT-01	H-1	J-1	S-1		HDW-5	F86				
119A	HINGED	3'-0"	7'-0"	SINGLE	F	WD	RA-18	FR-1	HM	PT-03	H-1	J-1	S-1		HDW-6	F75				
120A	HINGED	3'-0"	7'-0"	SINGLE	F	WD	RA-18	FR-1	HM	PT-03	H-1	J-1	S-1		HDW-6	F75				
121A	HINGED	3'-0"	7'-0"	SINGLE	F	WD	RA-18	FR-1	HM	PT-03	H-1	J-1	S-1		HDW-6	F76				
T/F, F. MEZZ																				
123A	HINGED	3'-0"	7'-0"	SINGLE	F	WD	PT-01			PT-01	H-2	J-2	S-2		HDW-7	(none)				

DOOR FRAME DETAILS			STEEL STUD WALLS		DOOR FRAMES	
						
DC-DOOR FRAME-SECTION-WOOD	*DTL-STOREFRONT PERIMETER DOOR JAMB	*DTL-STOREFRONT DOOR HEADER_STOP	FLUSH CONDITION	WRAP AROUND	FR-1	
						
4 3/4" HM	*DTL-STOREFRONT DOOR JAMB INTERMEDIATE	*DTL-JAMB TO CORNER 4IN	F FLUSH	S STOREFRONT	N NARROW LITE	
DC-DOOR FRAME-SECTION-HOLLOW METAL	*DTL-STOREFRONT DOOR JAMB	*DTL-JAMB TO CORNER 4IN				



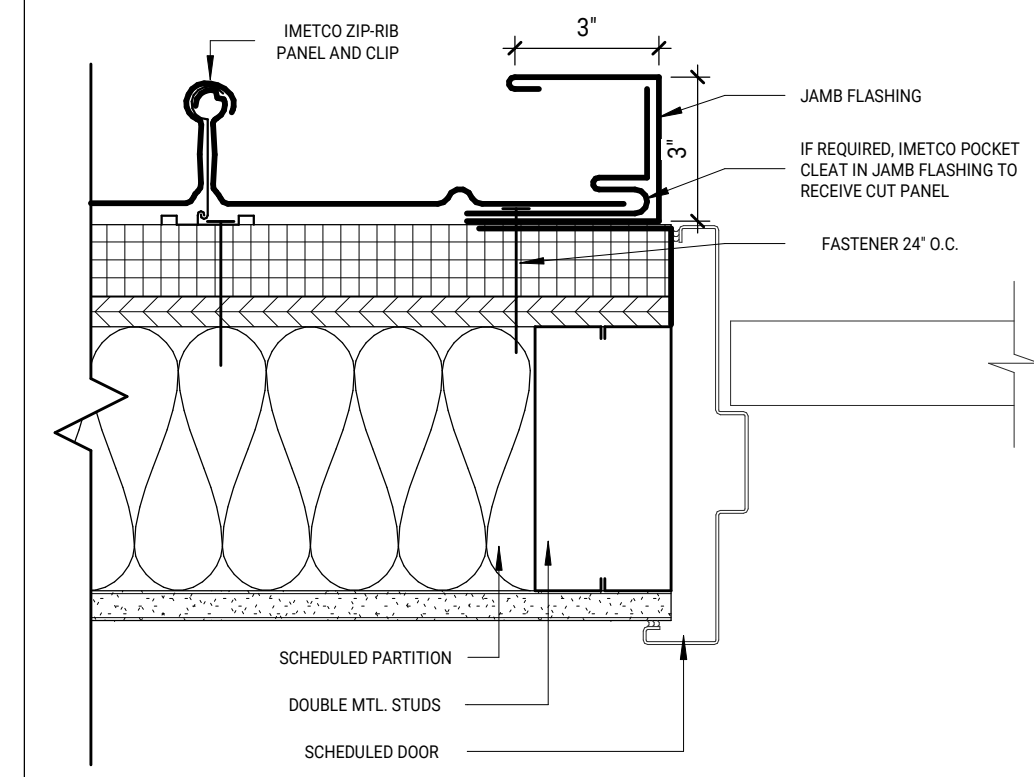
SILL DETAIL - S-1E
SCALE: 3" = 1'-0"

3A



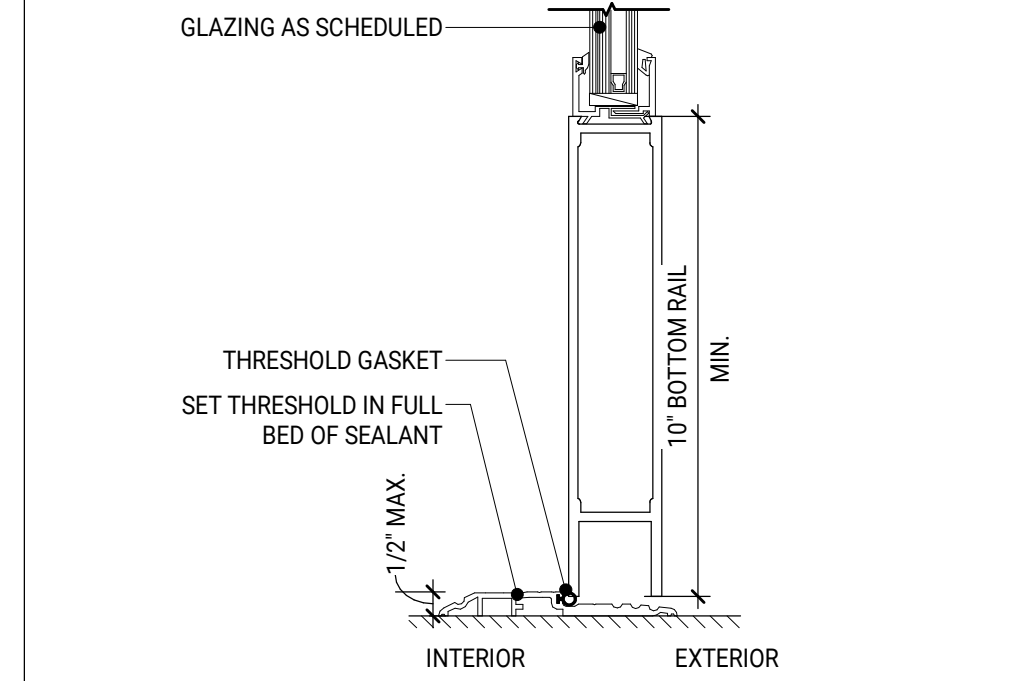
HEAD DETAIL - H-3
SCALE: 3" = 1'-0"

6C



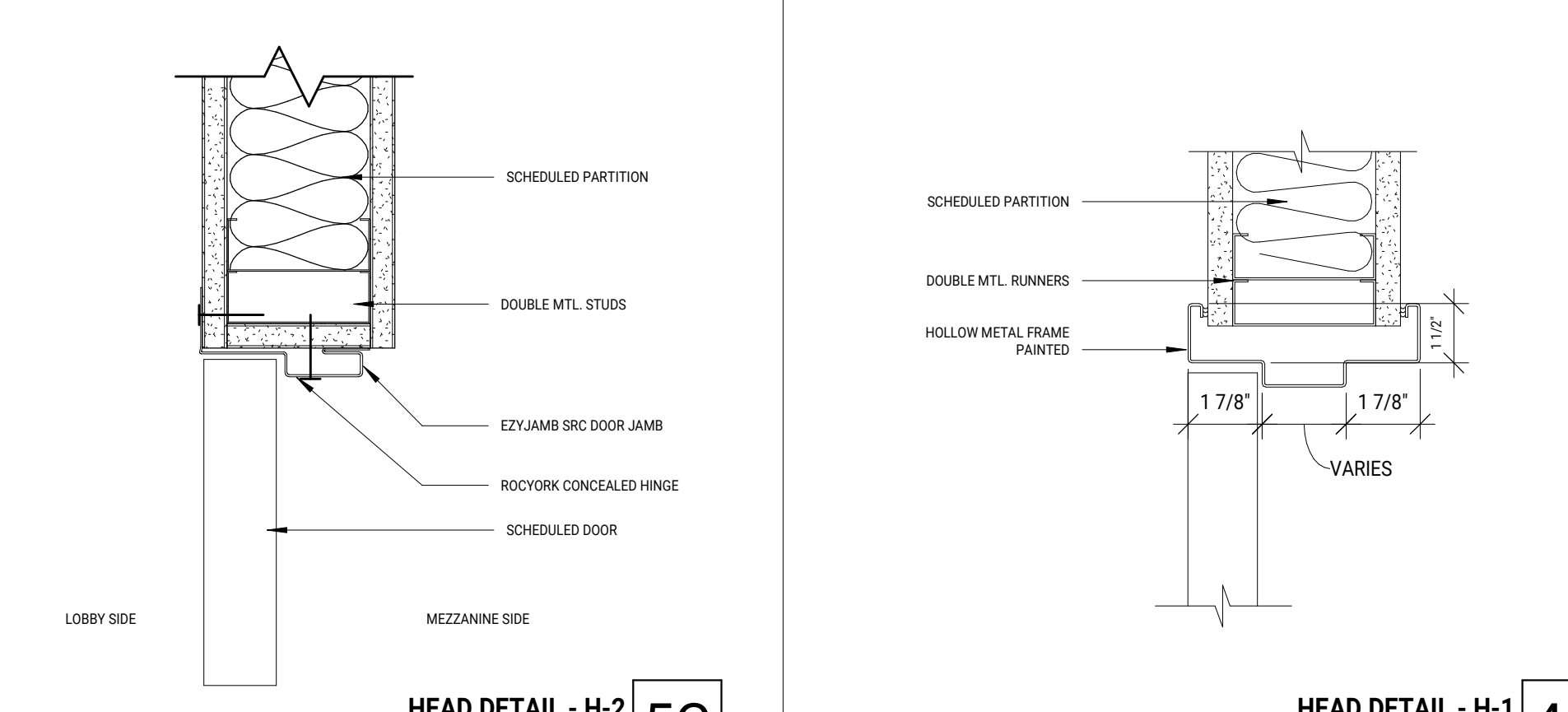
JAMB DETAIL - J-3
SCALE: 3" = 1'-0"

6B



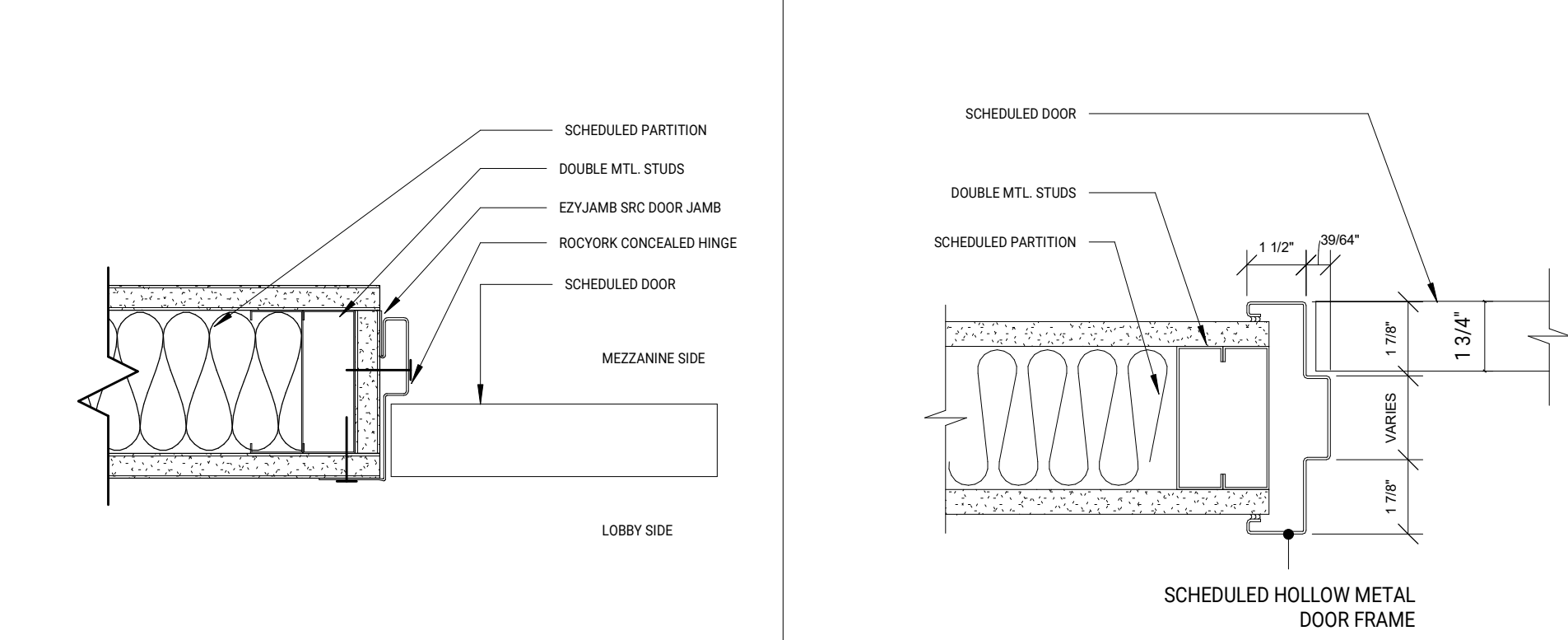
SILL DETAIL - S-2
SCALE: 3" = 1'-0"

6A



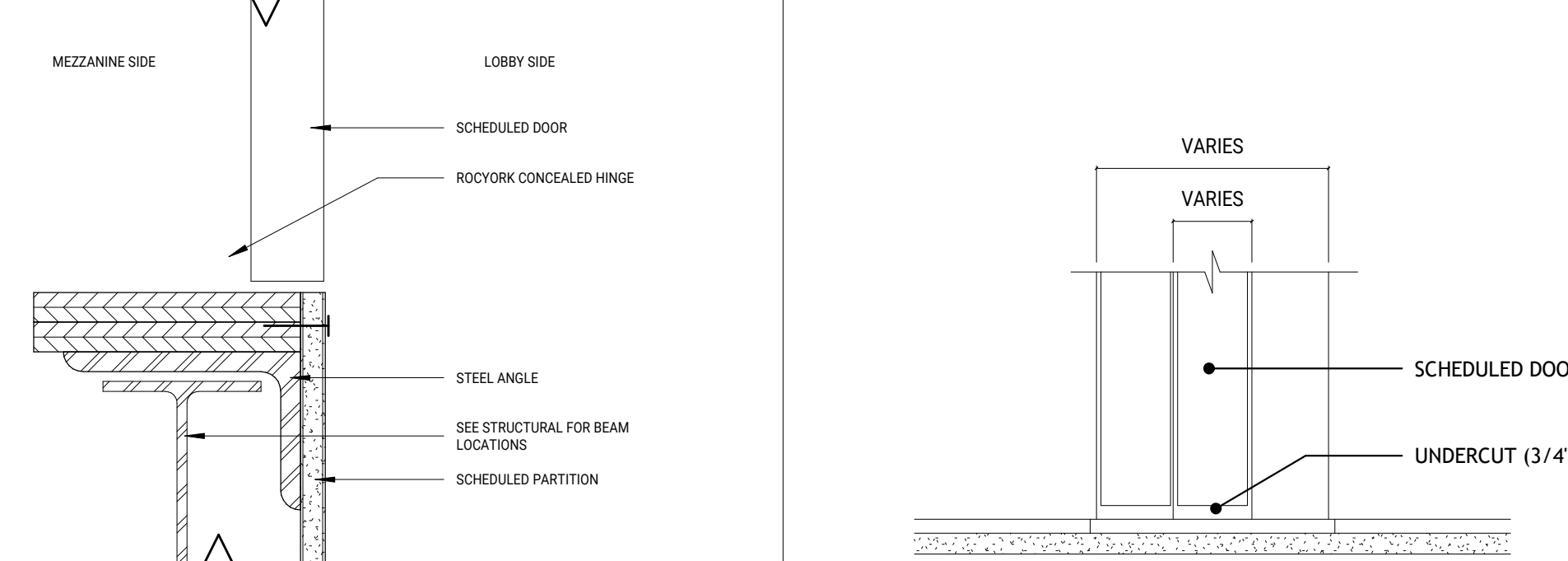
HEAD DETAIL - H-2
SCALE: 3" = 1'-0"

5C



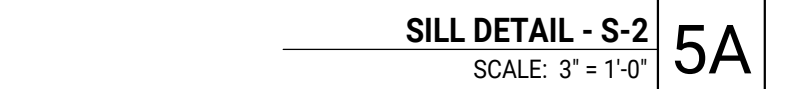
JAMB DETAIL - J-2
SCALE: 3" = 1'-0"

5B



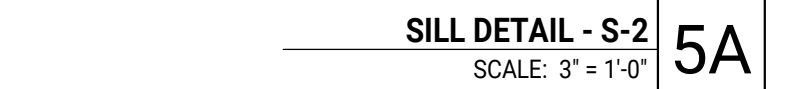
SILL DETAIL - S-2
SCALE: 3" = 1'-0"

5A



SILL DETAIL - S-1
SCALE: 3" = 1'-0"

4A



SILL DETAIL - S-1
SCALE: 3" = 1'-0"

4A

DOOR NOTES:	
• DOOR HARDWARE SHALL BE EASILY GRASPABLE WITH ONE HAND	
• ALL DOORS SHALL HAVE MAX 5LB PUSH/PULL	
• DOOR THRESHOLDS TO BE MAX 1/2" HIGH W/ 45 DEG. BEVELED EDGE.	
• DOOR STOPS TO BE HARD PLASTIC IMPACT PADS, DOOR STOPS TO PREVENT WALL DAMAGE WHERE APPLICABLE OR TO PREVENT DOOR FROM OVEREXTENDING.	
• FOR LOCK SET INFO SEE DOOR SCHEDULE	
• REFER TO ARCHITECT FOR HIGH FREQUENCY DOOR CLOSERS, WHERE NOT NOTED	
• ALL DOOR HARDWARE TO BE ADA COMPLIMENT LEVEL STYLE HANDLE OR PANIC HARDWARE WHERE REQUIRED.	
• DOOR HARDWARE SUPPLIER TO RECOMMEND DOOR SILENCER OPTION FOR DOORS AT PRIVATE OFFICES, MAIN AUDITORIUM DOORS AND AT HIGH TRAFFIC LOCATIONS. GASKET OR RUBBER STOPS TO MINIMIZE METAL TO METAL OR METAL TO WOOD CONTACT, PROVIDE DOOR SILENCER ON ALL DOORS AS APPROPRIATE PER DOOR TYPE.	
• HARDWARE: SCHLAGE ND SERIES OR APPROVED ALTERNATIVE.	
• WHERE PANIC HARDWARE IS REQUIRED, USE COMPATIBLE KEY CYLINDERS.	
• COORDINATE ALL KEYING REQUIREMENTS WITH OWNER.	
• HARDWARE TO INCLUDE ASTRAGAL WHERE NOTED IN THE DOOR SCHEDULE.	
• VERTICAL ROD EGRESS DEVICES TO BE CONCEALED AND APPROPRIATE HARDWARE PER DOOR TYPE. USE FALCON 25-R SERIES RIM DEVICE (PUSH PAD) WITH FALCON 25-C CONCEAL ROD AS BASIS FOR DESIGN.	
• IF NOT NOTED ON DOOR SCHEDULE, DOOR FRAME TO BE HOLLOW STEEL FRAME.	
• FOR ALL INSTANCES OF DOORS, HARDWARE AND LOCKSET REFER TO DOOR SCHEDULE AND RESPECTIVE FLOOR PLANS WHERE DOORS ARE TAGGED.	
• REFER TO DOOR SCHEDULE FOR ALL DOOR FINISHES.	
• REFER TO FLOOR PLANS FOR ALL DOOR SWING DIRECTIONS, TYP.	
• DOOR R.O. SIZES ARE LISTED FOR REFERENCE ONLY. GENERAL CONTRACTOR IS SOLELY RESPONSIBLE FOR COORDINATING FINAL ROUGH OPENING SIZES PRIOR TO INSTALLATION	
• REFER TO A-004 FOR ALL DOOR SIGNAGE GRAPHICS.	